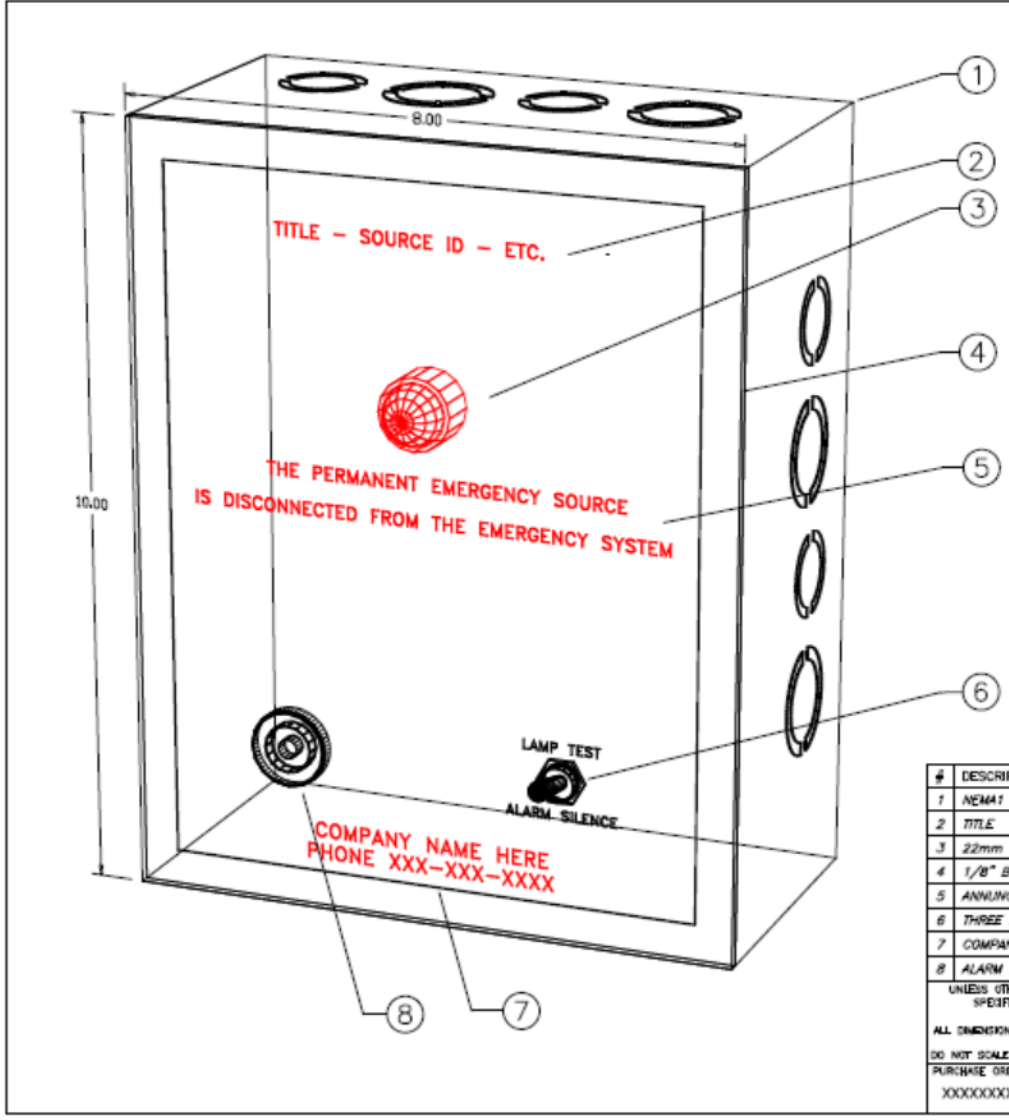


P6-700.3F CUSTOM REMOTE ANNUNCIATOR



National Electrical Code 2017 Provision 700.3(F)

A remote annunciator or alarm panel is required to give an audible and visual annunciation that the permanent emergency source is disconnected from the emergency system.

TEXT

THE PERMANENT EMERGENCY SOURCE IS DISCONNECTED FROM THE EMERGENCY SYSTEM

| FEATURES | |
|----------|--|
| # | DESCRIPTION |
| 1 | NEMA1 8"x10"x4" METAL ENCLOSURE |
| 2 | TITLE |
| 3 | 22mm LED |
| 4 | 1/8" BLACK ENGRAVABLE PLASTIC FACEPLATE, WALL MOUNT |
| 5 | ANNUNCIATION TEXT |
| 6 | THREE POSITION MOMENTARY "LAMP TEST/ALARM SILENCE" TOGGLE SWITCH |
| 7 | COMPANY NAME & PHONE |
| 8 | ALARM HORN 90 DB AT 12 OR 24 VDC |

| | | | |
|-----------------------------|---|-----------------------|----------------|
| UNLESS OTHERWISE SPECIFIED: | Panelsource Engine & Generator Controls | DRAWN BY: TE | SCALE: NONE |
| ALL DIMENSIONS INCHES | | CHECKED: | DATE: 03/04/20 |
| DO NOT SCALE DRAWING | TITLE: P6 EMS DISCONNECT INDICATION SAMPLE LAYOUT | DRAWING NUMBER: Lxxxx | |
| PURCHASE ORDER: XXXXXXXXX | | SHEET 1 OF 1 | |

STANDARD FEATURES

- Custom Engraved 3-Ply Plastic
- Alarm Silence / Lamp Test Switch
- NEMA 1 8" X 10" X 4" Enclosure
- Fully Sealed Logic Module
- Single 22 mm Red LED
- Input Selectable Horn
- DC Positive Input Switching
- Visual & Audible Indication
- Surface Mount
- 12 or 24 Volts DC

OPTIONAL

- Flush Mount
- Inverter for DC Negative Inputs