

IGL-RA15

Remote annunciator

SW version 2.0.0

| | |
|---------------------------------|----|
| 1 Document information | 3 |
| 2 System overview | 6 |
| 3 Installation and wiring | 10 |
| 4 Technical data | 15 |

Table of contents

| | |
|--------------------------------------|-----------|
| 1 Document information | 3 |
| 1.1 Clarification of notation | 3 |
| 1.2 About this guide | 3 |
| 1.3 Legal notice | 3 |
| 1.4 Document history | 5 |
| 2 System overview | 6 |
| 2.1 Controller type settings | 6 |
| 2.2 Controller address setting | 6 |
| 2.3 LEDs color change | 7 |
| 2.4 Horn timeout setting | 7 |
| 2.5 Signal LEDs | 7 |
| 2.5.1 PWR LED | 8 |
| 2.6 Horn | 8 |
| 2.7 Lamp and horn test | 8 |
| 2.8 LED labels | 8 |
| 3 Installation and wiring | 10 |
| 3.1 Rubber seal installation | 10 |
| 3.2 Opening the IGL-RA15-FPC | 11 |
| 3.3 Terminals and dimensions | 13 |
| 3.4 Recommended wiring | 14 |
| 4 Technical data | 15 |

1 Document information

| | |
|-------------------------------------|---|
| 1.1 Clarification of notation | 3 |
| 1.2 About this guide | 3 |
| 1.3 Legal notice | 3 |
| 1.4 Document history | 5 |

1.1 Clarification of notation

Note: This type of paragraph calls readers attention to a notice or related theme.

IMPORTANT: This type of paragraph highlights a procedure, adjustment etc., which can cause a damage or improper function of the equipment if not performed correctly and may not be clear at first sight.

Example: This type of paragraph contains information that is used to illustrate how a specific function works.

1.2 About this guide

Remote annunciator IGL-RA15, order code: **EM2IGLRABAA** and

Remote annunciator IGL-RA15-FPC (FirePump version), order code: **EM2FPCRAEAA** are designed as an extension signaling units for :

- ▶ IntelliSys-NT or IntelliSys-CU
- ▶ IntleiGen-NT or IntleiGen-CU
- ▶ IntelliCompact-NT
- ▶ IntelliLite-NT or IntelliLite-CU
- ▶ IntreliDrive-DCU (Marine, Industrial)
- ▶ IntelliDrive-Mobile (Logger)
- ▶ IntelliDrive-Lite (Lite, Marine, FPC, IPC, IPU, EM)

IGL-RA15 is equipped with a fully configurable tri color (red, orange, green) LED for intuitive operation together with high functionality.

Note: The FPC unit does not have any buttons, so all adjustment bellow needs to be adjusted by opening the cover and pressing the micro switches of the buttons manually, see **Opening the IGL-RA15-FPC on page 11**

1.3 Legal notice

This End User's Guide/Manual as part of the Documentation is an inseparable part of ComAp's Product and may be used exclusively according to the conditions defined in the "END USER or Distributor LICENSE AGREEMENT CONDITIONS – COMAP CONTROL SYSTEMS SOFTWARE" (License Agreement) and/or in the "ComAp a.s. Global terms and conditions for sale of Products and provision of Services" (Terms) and/or in the "Standardní podmínky projektů komplexního řešení ke smlouvě o dílo, Standard Conditions for Supply of Complete Solutions" (Conditions) as applicable.

ComAp's License Agreement is governed by the Czech Civil Code 89/2012 Col., by the Authorship Act 121/2000 Col., by international treaties and by other relevant legal documents regulating protection of the intellectual properties (TRIPS).

The End User and/or ComAp's Distributor shall only be permitted to use this End User's Guide/Manual with ComAp Control System Registered Products. The Documentation is not intended and applicable for any other purpose.

Official version of the ComAp's End User's Guide/Manual is the version published in English. ComAp reserves the right to update this End User's Guide/Manual at any time. ComAp does not assume any responsibility for its use outside of the scope of the Terms or the Conditions and the License Agreement.

Licensed End User is entitled to make only necessary number of copies of the End User's Guide/Manual. Any translation of this End User's Guide/Manual without the prior written consent of ComAp is expressly prohibited!

Even if the prior written consent from ComAp is acquired, ComAp does not take any responsibility for the content, trustworthiness and quality of any such translation. ComAp will deem a translation equal to this End User's Guide/Manual only if it agrees to verify such translation. The terms and conditions of such verification must be agreed in the written form and in advance.

For more details relating to the Ownership, Extent of Permitted Reproductions Term of Use of the Documentation and to the Confidentiality rules please review and comply with the ComAp's License Agreement, Terms and Conditions available on www.comap-control.com.

Security Risk Disclaimer

Pay attention to the following recommendations and measures to increase the level of security of ComAp products and services.

Please note that possible cyber-attacks cannot be fully avoided by the below mentioned recommendations and set of measures already performed by ComAp, but by following them the cyber-attacks can be considerably reduced and thereby to reduce the risk of damage. ComAp does not take any responsibility for the actions of persons responsible for cyber-attacks, nor for any damage caused by the cyber-attack. However, ComAp is prepared to provide technical support to resolve problems arising from such actions, including but not limited to restoring settings prior to the cyber-attacks, backing up data, recommending other preventive measures against any further attacks.

Warning: Some forms of technical support may be provided against payment. There is no legal or factual entitlement for technical services provided in connection to resolving problems arising from cyber-attack or other unauthorized accesses to ComAp's Products or Services.

General security recommendations and set of measures

1. AccessCode

- Change the AccessCode BEFORE the device is connected to a network.
- Use a secure AccessCode – ideally a random string of 8 characters containing lowercase, uppercase letters and digits.
- For each device use a different AccessCode.

2. Password

- Change the password BEFORE the device enters a regular operation.
- Do not leave displays or PC tools unattended if an user, especially administrator, is logged in.

3. Controller Web interface

- The controller web interface at port TCP/80 is based on http, not https, and thus it is intended to be used only in closed private network infrastructures.
- Avoid exposing the port TCP/80 to the public Internet.

4. MODBUS/TCP

- The MODBUS/TCP protocol (port TCP/502) is an instrumentation protocol designed to exchange data between locally connected devices like sensors, I/O modules, controllers etc. From its nature it does not contain any kind of security – neither encryption nor authentication. Thus it is intended to be used only in closed private network infrastructures.
- Avoid exposing the port TCP/502 to the public Internet.

5. SNMP

- The SNMP protocol (port UDP/161) version 1,2 is not encrypted. Thus it is intended to be used only in closed private network infrastructures.
- Avoid exposing the port UDP/161 to the public Internet.

1.4 Document history

| Revision Number | Related SW Version | Date |
|-----------------|--------------------|------------|
| 2 | 2.0.0 | 10.07.2019 |
| 1 | 2.0.0 | 29.5.2018 |

 [back to Document information](#)

2 System overview

| | |
|--------------------------------------|---|
| 2.1 Controller type settings | 6 |
| 2.2 Controller address setting | 6 |
| 2.3 LEDs color change | 7 |
| 2.4 Horn timeout setting | 7 |
| 2.5 Signal LEDs | 7 |
| 2.6 Horn | 8 |
| 2.7 Lamp and horn test | 8 |
| 2.8 LED labels | 8 |

 [back to Table of contents](#)

2.1 Controller type settings

| Controller type | Jumper A | Jumper B | Address |
|---|----------|----------|--------------|
| InteliCompact-NT InteliLite-NT InteliDrive Lite | OPEN | OPEN | 1 |
| InteliGen-NT InteliSys-NT InteliDrive DCU InteliLite (IL3) | CLOSED | OPEN | 5+6 |
| InteliGen-NT InteliSys-NT InteliDrive DCU InteliLite (IL3) | CLOSED | CLOSED | user defined |

2.2 Controller address setting

SW changing of CAN1 address is enabled only when both jumpers are closed. Any one of these addresses (1+2 or 3+4 or 5+6 or 7+8) can be set by following steps:

- ▶ Switch to programming mode (Hold the *Horn reset* and *Lamp test* when unit is powering on)
 - Status led is yellow
- ▶ Press *Lamp test* sixteen times
- ▶ Set the address up by pressing Horn reset.
 - The number of red luminous LEDs means the CAN1 addresses (two for addresses 1+2, four for addresses 3+4, six for addresses 5+6 and eight for addresses 7+8)
- ▶ Press *Lamp test*

2.3 LEDs color change

Each LED color is adjusted independently of controller output settings. If controller output 1 is set as “Common Shutdown” it doesn’t mean red LED1 color for IGL-RA15. The LEDs color can be adjusted by following steps:

- ▶ Switch to programming mode (Hold the *Horn reset* and *Lamp test* when unit is powering on)
 - Status led is yellow
- ▶ Press *Horn reset* to change the LED1 color (green, yellow, red)
- ▶ Press *Lamp test* to switch to the next LED color adjusting
- ▶ Continue to adjust all LEDs color
- ▶ After LED15 color adjusting press three times *Lamp test*

Note: Signal LEDs are all adjusted to RED colors from production.

2.4 Horn timeout setting

The horn output is activated if any of red or yellow LED is on. Output is on until pressing Horn reset or horn timeout counts down. The timeout can be set by following steps:

- ▶ Switch to programming mode (Hold the *Horn reset* and *Lamp test* when unit is powering on)
 - Status led is yellow
- ▶ Press *Lamp test* fifteen times
- ▶ Set the horn timeout by pressing *Horn reset*.
 - The number of green luminous LEDs means timeout in 10s.
 - Any for disabling horn output, 1 for 10s timeout, 2 for 10s timeout, 15 for disabling horn timeout.
- ▶ Press *Lamp test* two times

Note: Note: If there is no operator action during address setting, color adjusting or timeout setting, the unit returns to normal operation without changes saving.

2.5 Signal LEDs

The signal LEDs are handled like binary outputs. It means all what can be configured to binary outputs can be also configured to the LEDs of iGL-RA15.

- ▶ The LED lights, if configured logical output is active on the controller
- ▶ The green LED is dark, if configured logical output is not active on the controller
- ▶ The yellow or red LED is dark, if configured logical output is not active on the controller and *horn reset* was pressed.
- ▶ The yellow or red LED blinks, if configured logical output is not active on the controller and *horn reset* was still not pressed.

2.5.1 PWR LED

- ▶ Is blinking green, if the unit is OK and the communication to the master controller is OK.
- ▶ Is blinking red, if the unit is OK, but the communication to the master controller is not running.
- ▶ Is blinking yellow, if EEPROM check not passed OK after power on
- ▶ Is steady yellow during the LED colour, horn timeout or controller address adjustment

Note: If the PWR LED is blinking yellow, the unit must be reconfigured (see chapter LEDs color change, Horn timeout setting or Controller address setting.)

2.6 Horn

The horn is activated if:

- ▶ Some of red or yellow LED lights up or
- ▶ At the end of the extended lamp test (see below)

The horn can be silenced:

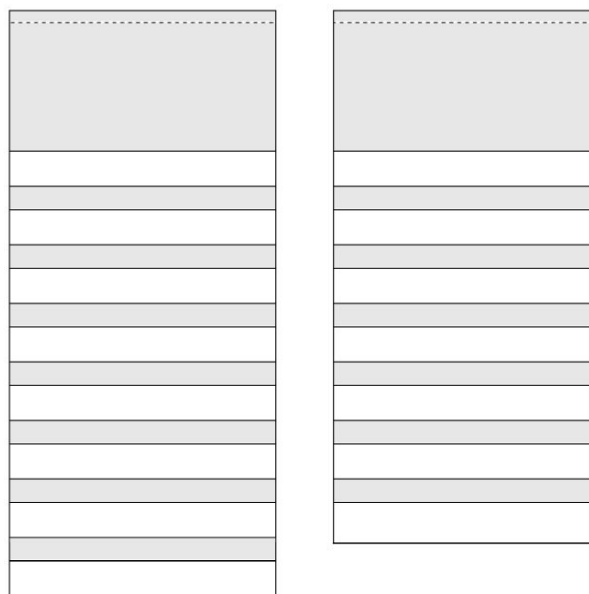
- ▶ By pressing horn reset button or
- ▶ It silences automatically after adjusted time (see chapter Horn timeout setting above)

2.7 Lamp and horn test

Pressing and holding *lamp test* button for less than 2s execute the basic lamp test. All LEDs light up with the configured colour. If the button is hold longer than 2s, an extended test is started. Every LED is tested step-by-step in green colour and then in red colour. The horn is activated at the end of the test. After that the unit returns to normal operation. The horn can be silenced with *horn reset*.

2.8 LED labels

The labels are slipped to slots in the front foil. The slot openings are located on the upper edge of the front panel. The RA15 module is shipped with one A4 sheet of foil for printing of labels.





Note: Not available in FPC version (EM2FPCRAEAA)

[◀ back to System overview](#)

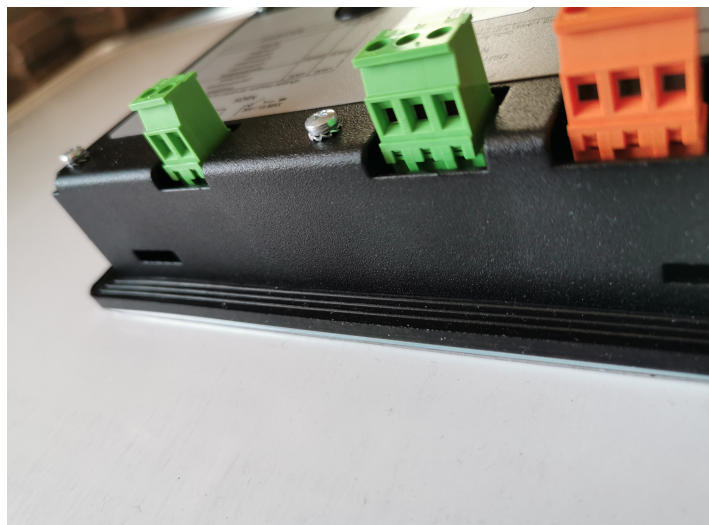
3 Installation and wiring

| | |
|------------------------------------|----|
| 3.1 Rubber seal installation | 10 |
| 3.2 Opening the IGL-RA15-FPC | 11 |
| 3.3 Terminals and dimensions | 13 |
| 3.4 Recommended wiring | 14 |

 [back to Table of contents](#)

3.1 Rubber seal installation

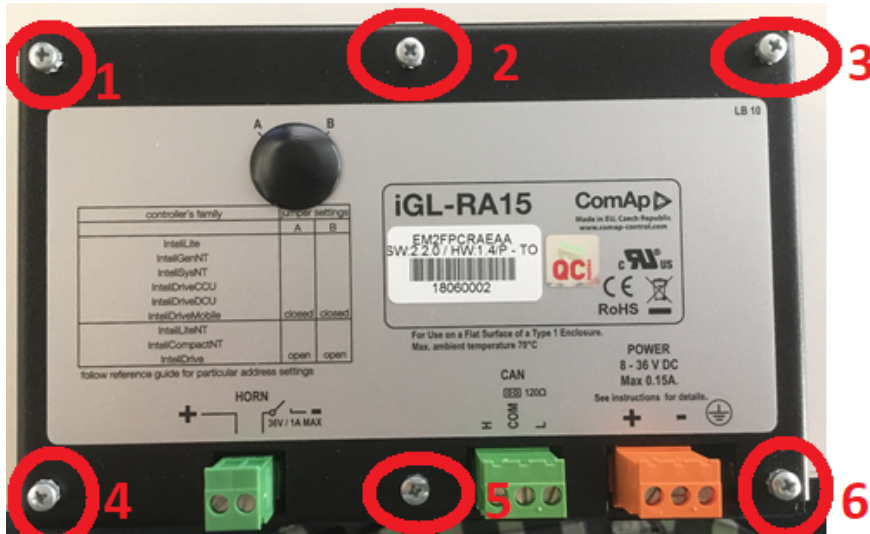
The correct way to install the rubber sealing is shown on the pictures below.



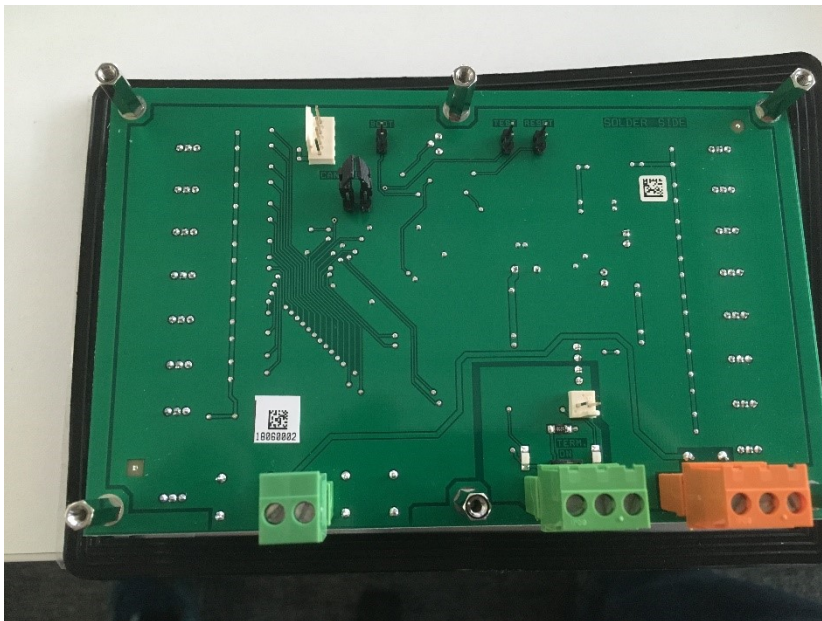
3.2 Opening the IGL-RA15-FPC

This is just for authorized acces:

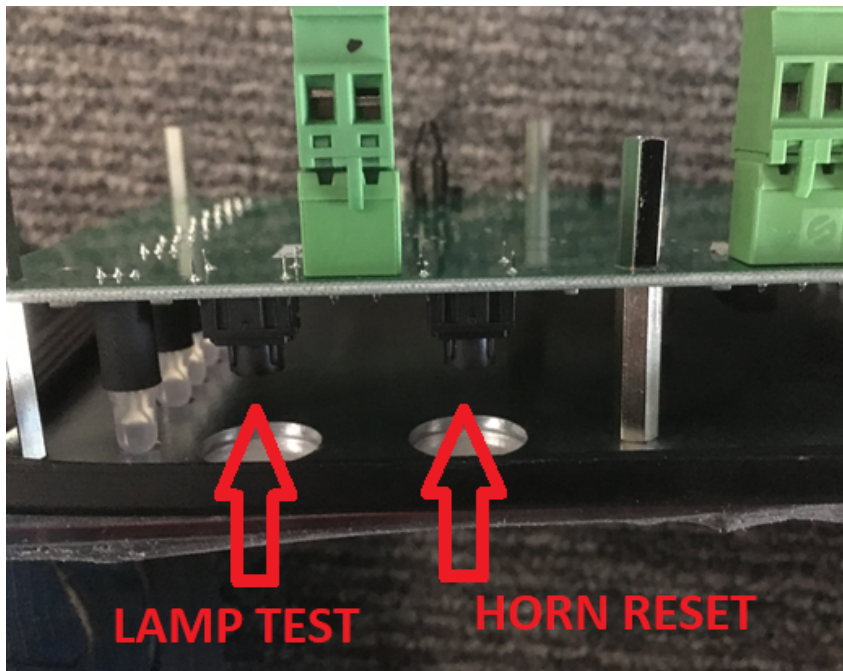
1. Remove the screws



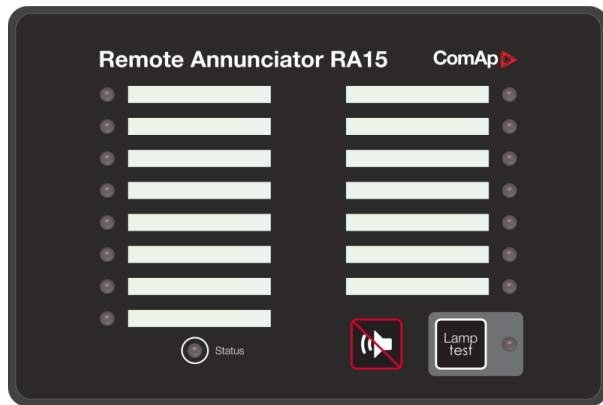
2. Bottom side



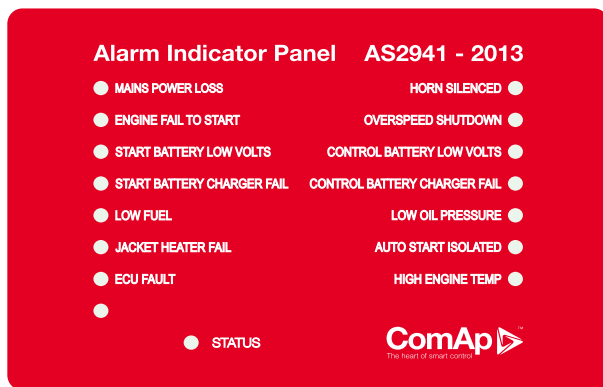
3. You can directly press the micro switches on PCB



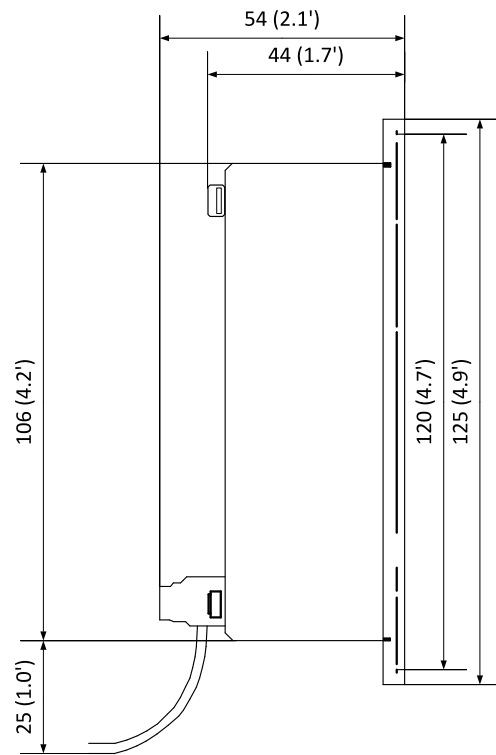
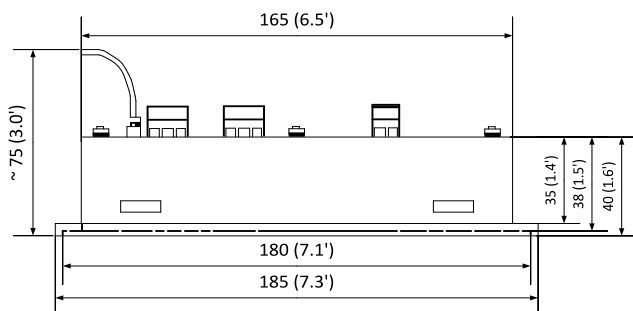
3.3 Terminals and dimensions



IGL-RA15



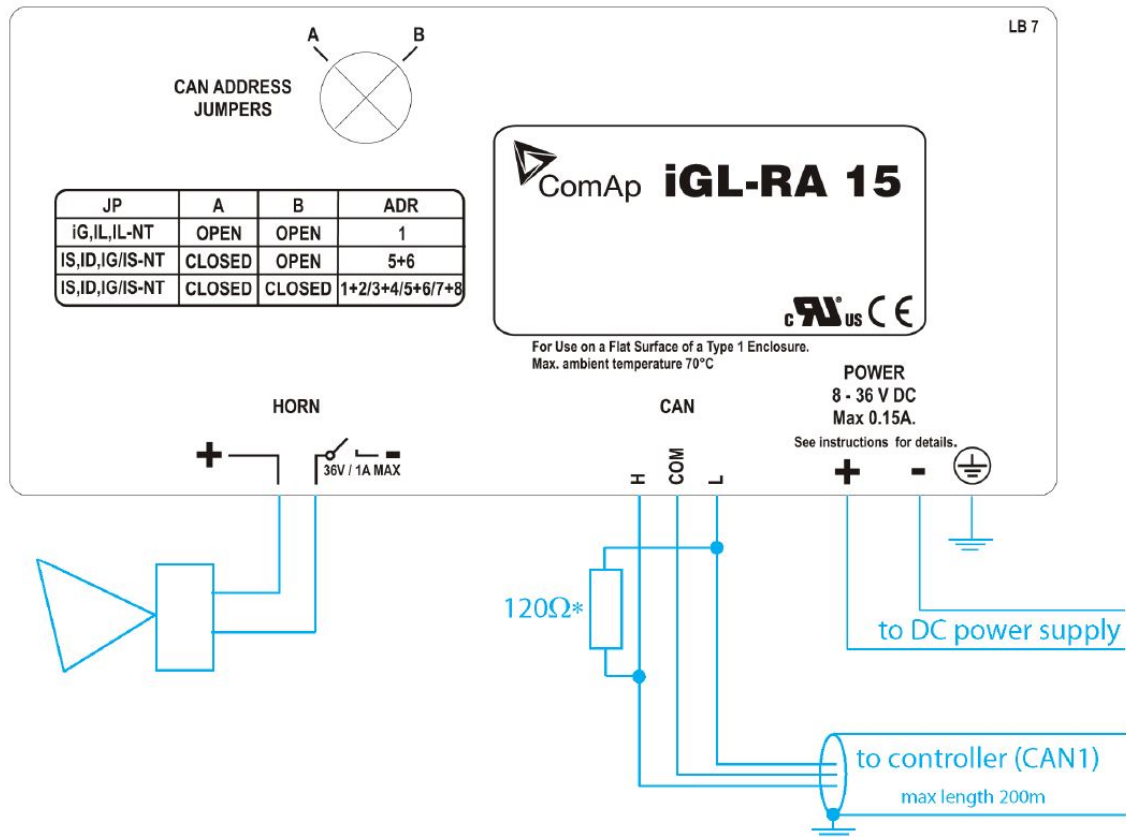
IGL-RA15-FPC



Cutout
for Remote Annunciator

167 × 108 mm
(6.6 × 4.3')

3.4 Recommended wiring



* terminator resistor only when iGL-RA 15 is the last unit on the CAN1 bus.

Note: The shielding of the CAN bus cable has to be grounded at one point only! see **Technical data on page 15** for recommended CAN bus cable type.

🔍 back to Installation and wiring

4 Technical data

Power supply

| | |
|----------------|---|
| Voltage supply | 8-36 VDC |
| Consumption | 0.35-0.1A (+1Amax horn output) depends on supply voltage |

Operating conditions

| | |
|--------------------------------|--|
| Operating temperature | -20 °C to +70 °C |
| Storage temperature | -30 °C to +80 °C |
| Protection front panel | IP65 |
| Humidity | 85% |
| Standard conformity | |
| Low Voltage Directive | EN 61010-1:95 +A1:97 |
| Electro-magnetic Compatibility | EN 50081-1:94, EN 50081-2:96 EN 50082-1:99, EN 50082-2:97 |
| Vibration | 5-25 Hz, $\pm 1,6$ mm 25-100 Hz, $a = 4$ g |
| Shocks | $a=200$ m/s ² |
| Heat radiation | 2 W |

Dimensions and weight

| | |
|------------|--------------|
| Dimensions | 180×120×55mm |
| Weight | 950g |

Horn output

| | |
|---------------------------|--------|
| Maximum current | 1.0 A |
| Maximum switching voltage | 36 VDC |

CAN bus interface

| | |
|------------------------|-------------------------|
| Galvanic separated | |
| Maximal CAN bus length | 200m |
| Speed | 250kBd |
| Nominal impedance | 120Ω |
| Cable type | twisted pair (shielded) |

Following dynamic cable parameters are important especially for maximal 200 meters CAN bus length:

| | |
|---------------------------------|--------------------------|
| Nominal Velocity of Propagation | min. 75% (max. 4.4 ns/m) |
| Wire crosscut | min.0.25 mm ² |
| Maximal attenuation (at 1 MHz) | 2 dB / 100m |

Recommended Industrial Automation & Process Control Cables

BELDEN (see www.belden.com):

- ▶ 3082A DeviceBus for Allen-Bradley DeviceNet
- ▶ 3083A DeviceBus for Allen-Bradley DeviceNet
- ▶ 3086A DeviceBus for Honeywell SDS
- ▶ 3087A DeviceBus for Honeywell SDS
- ▶ 3084A DeviceBus for Allen-Bradley DeviceNet
- ▶ 3085A DeviceBus for Allen-Bradley DeviceNet
- ▶ 3105A Paired EIA Industrial RS485 cable

LAPP CABLE (see www.lappcable.com):

- ▶ Unitronic BUS DeviceNet Trunk Cable
- ▶ Unitronic BUS DeviceNet Drop Cable
- ▶ Unitronic BUS CAN
- ▶ Unitronic-FD BUS P CAN UL/CSA

 [back to Table of contents](#)