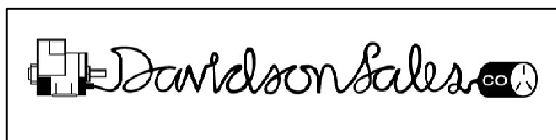
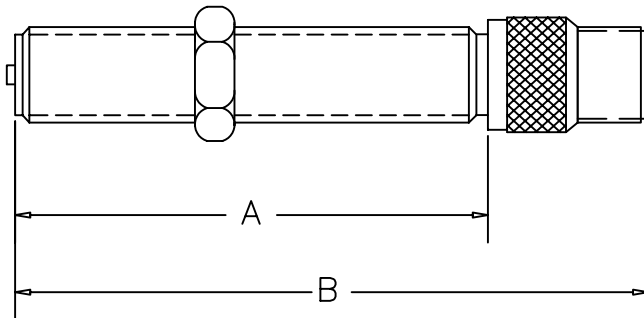
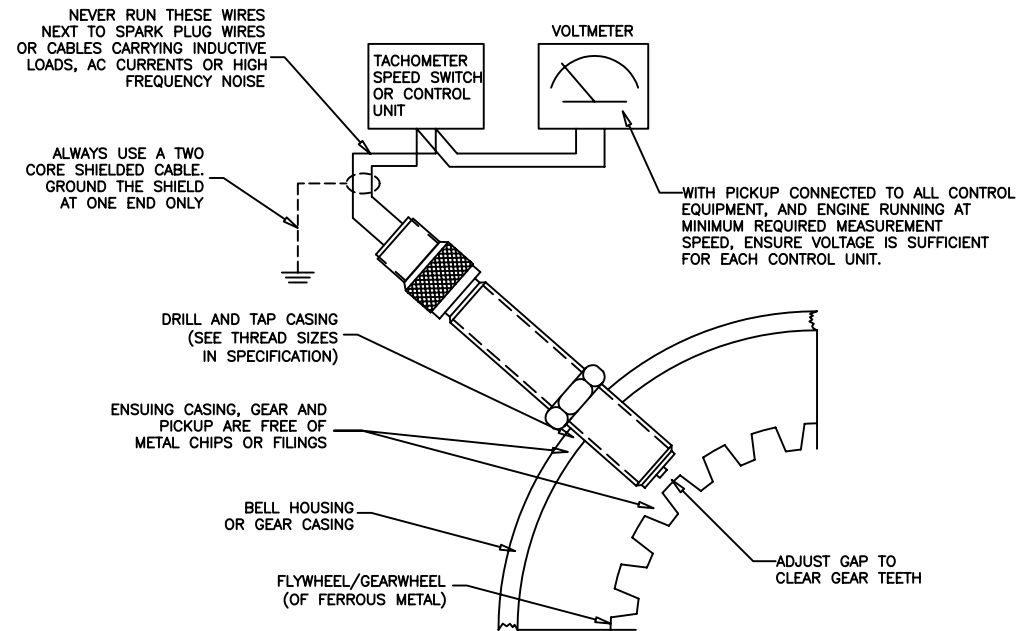


MAGNETIC PICKUP AND ACCESSORIES

PART NUMBER	THREAD	SIZE DIM. A	SIZE DIM. B	CONNECTION	OHMIC VALUE	DRILL
DSC17200	3/8"-24 UNF	2.25"	2.7"	72" Shielded 22 AWG	300 Ohm +/- 20%	0.332" or Q
DSC17400	3/8"-24 UNF	4.0"	4.43"	72" Shielded 22 AWG	1000 Ohm +/- 20%	0.332" or Q
DSC8933-K	5/8"-18 UNF	3.5"	4.0"	72" Non-Shielded 16 AWG	1200 Ohm +/- 20%	37/64"
DSC15400	5/8"-18 UNF	2.875"	4.0"	Two Pin MS 3106 Connector	1200 Ohm +/- 20%	37/64"
R8931	3/4"-16 UNF	4.0"	4.4"	9" Non-Shielded 16 AWG	1000 Ohm +/- 20%	11/64"
R8930	3/4"-16 UNF	2.2"	2.6"	9" Non-Shielded 16 AWG	1000 Ohm +/- 20%	11/64"
DSC6732C	5/8"-16 UNF	2.75"	3.125"	Dual 3" Packard Connector	200 Ohm +/- 25%	37/64"
PART NUMBER	LENGTH	WIRE		DESCRIPTION	CONNECTOR	
DSC010	10'	18 AWG	BELDEN	WIRING HARNESS 2 PIN	MS3106 STRAIGHT	
DSC010-15	15'	18 AWG	BELDEN	WIRING HARNESS 2 PIN	MS3106 STRAIGHT	
DSC011	10'	18 AWG	BELDEN	WIRING HARNESS 2 PIN	MS3106 RIGHT ANGLE	
DSC011-15	15'	18 AWG	BELDEN	WIRING HARNESS 2 PIN	MS3106 RIGHT ANGLE	



WWW.DAVIDSONSALES.COM
 839 BILL FRANCE BLVD., DAYTONA BEACH, FL 32117
 PHONE (386)-274-2079 PHONE (800)-383-2078
 FAX (386)-274-2279



TYPICAL INSTALLATION